

# Is community engagement the answer to volunteering's diversity and recruitment challenges?

Stephen Dale  
Head of Community Partnerships

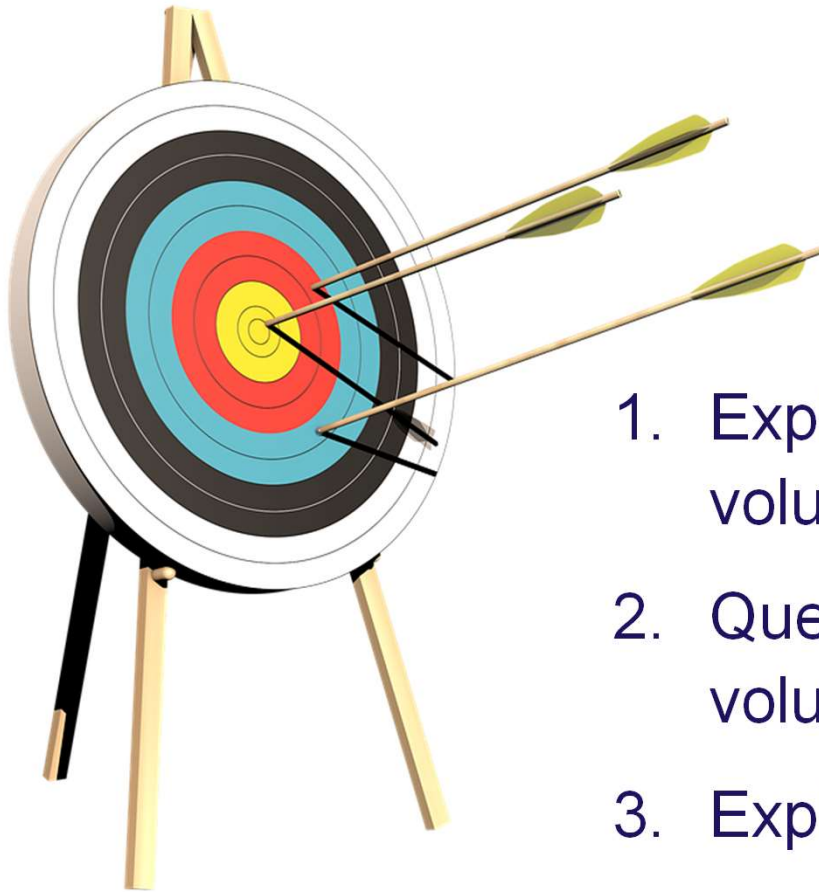


Or....

**“Is volunteering dead?”**

# Aims

---



1. Explore boundaries between volunteering & social action
2. Question rules we place on volunteering
3. Explore ways to widen impact

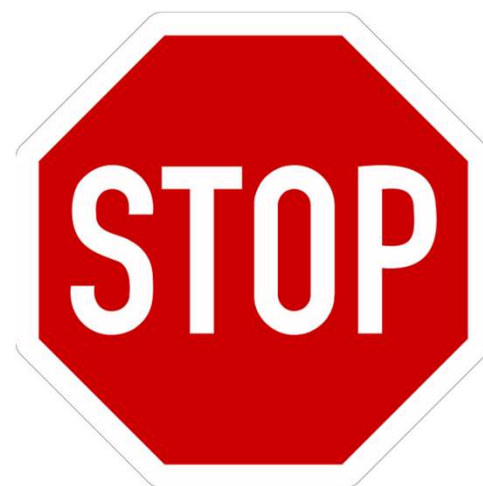
# What attracts...

---

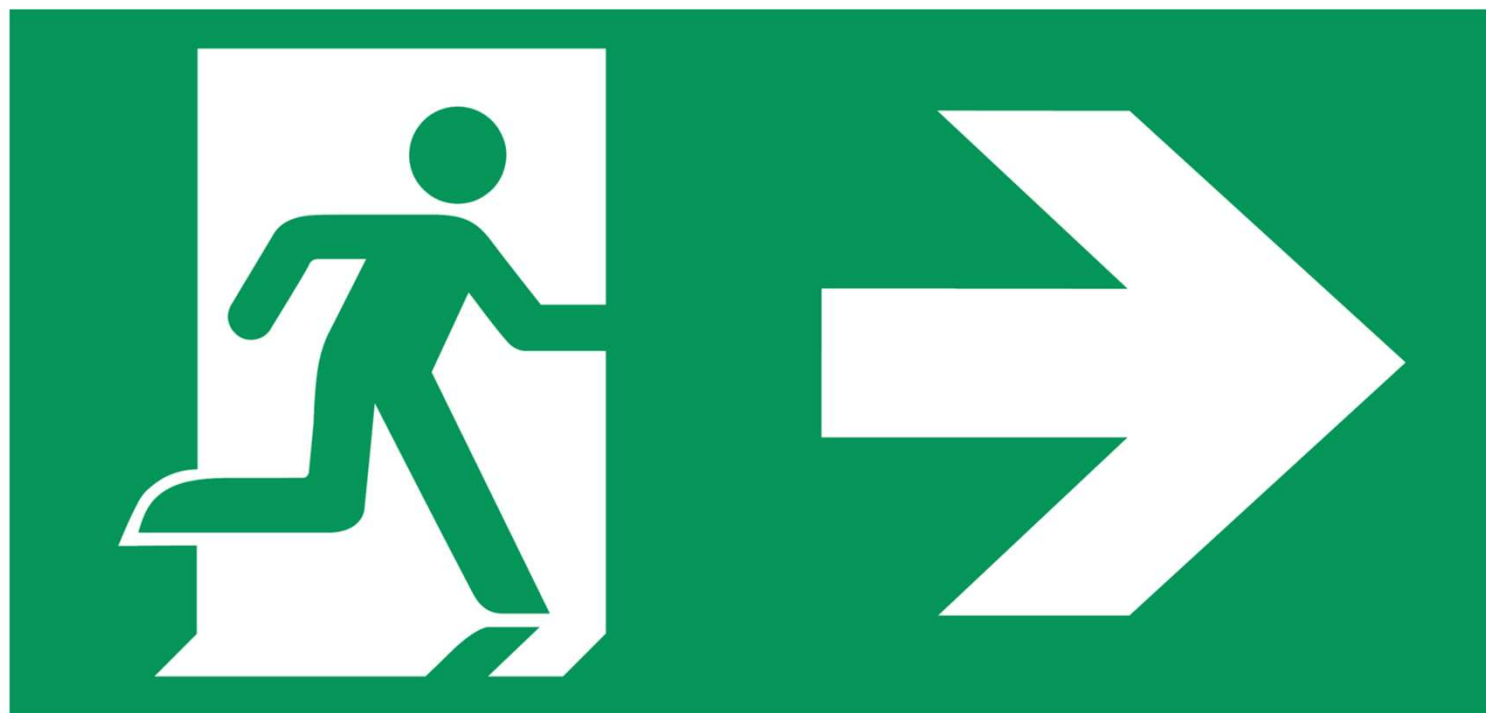


# The rules!

---







safety-signsupplies.co.uk

09432

# Dorothy House...

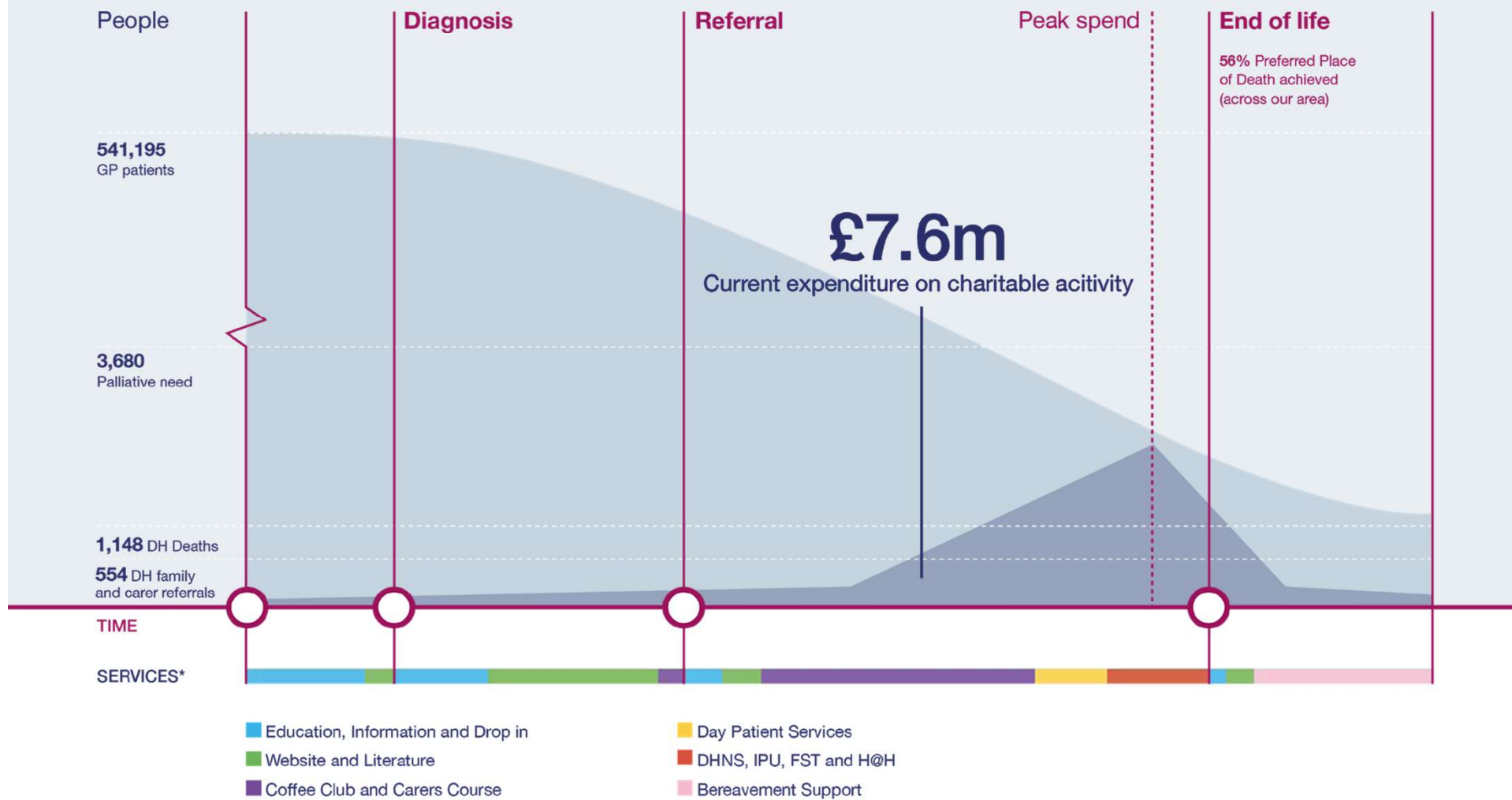
## The Ecosystem Approach





# Our services

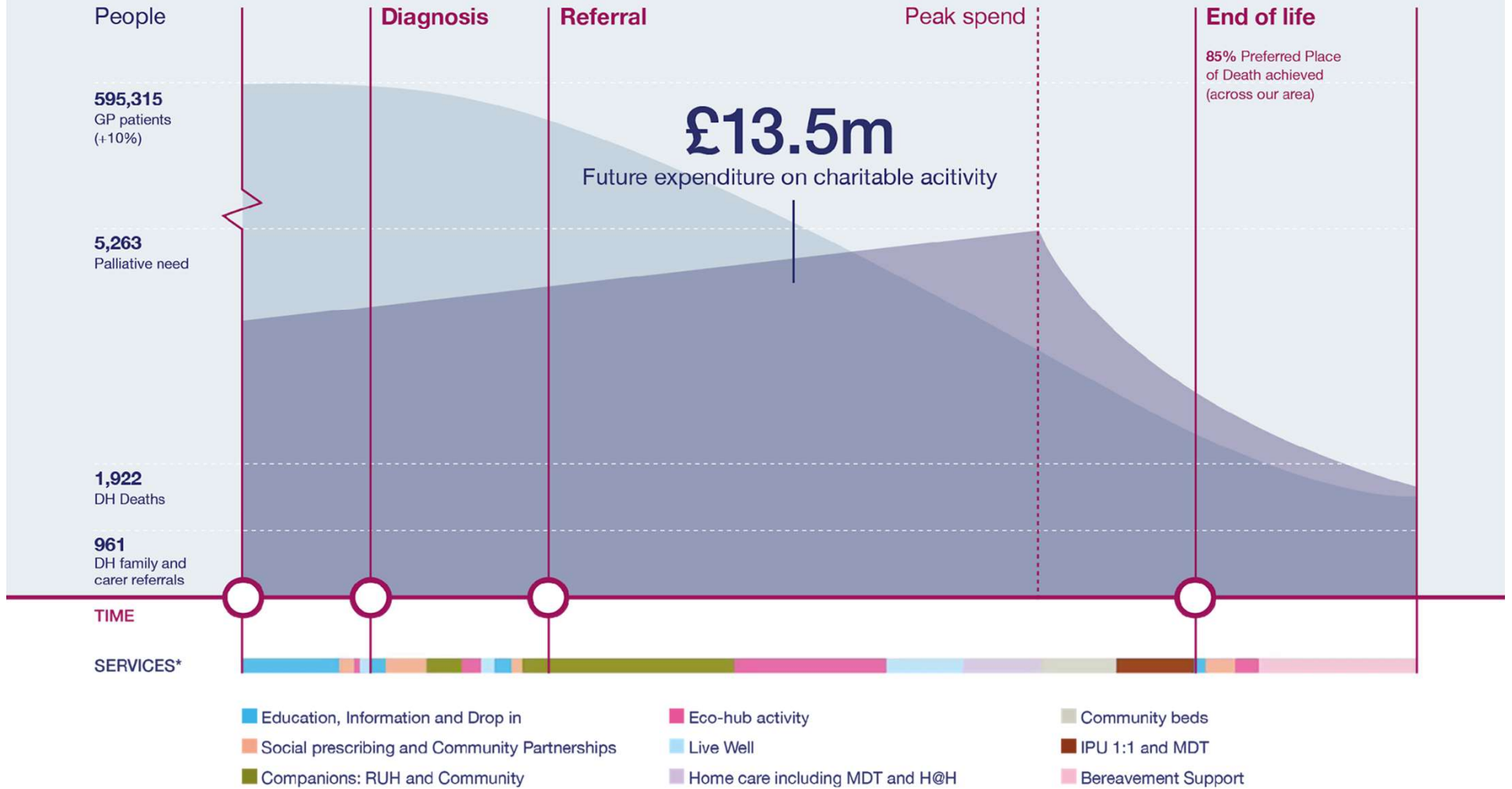
## 2016-17



\*All services offered according to the patient need

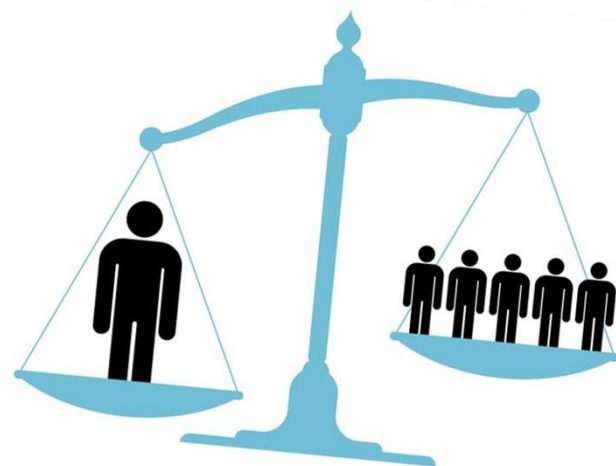
# Our services

2024-25



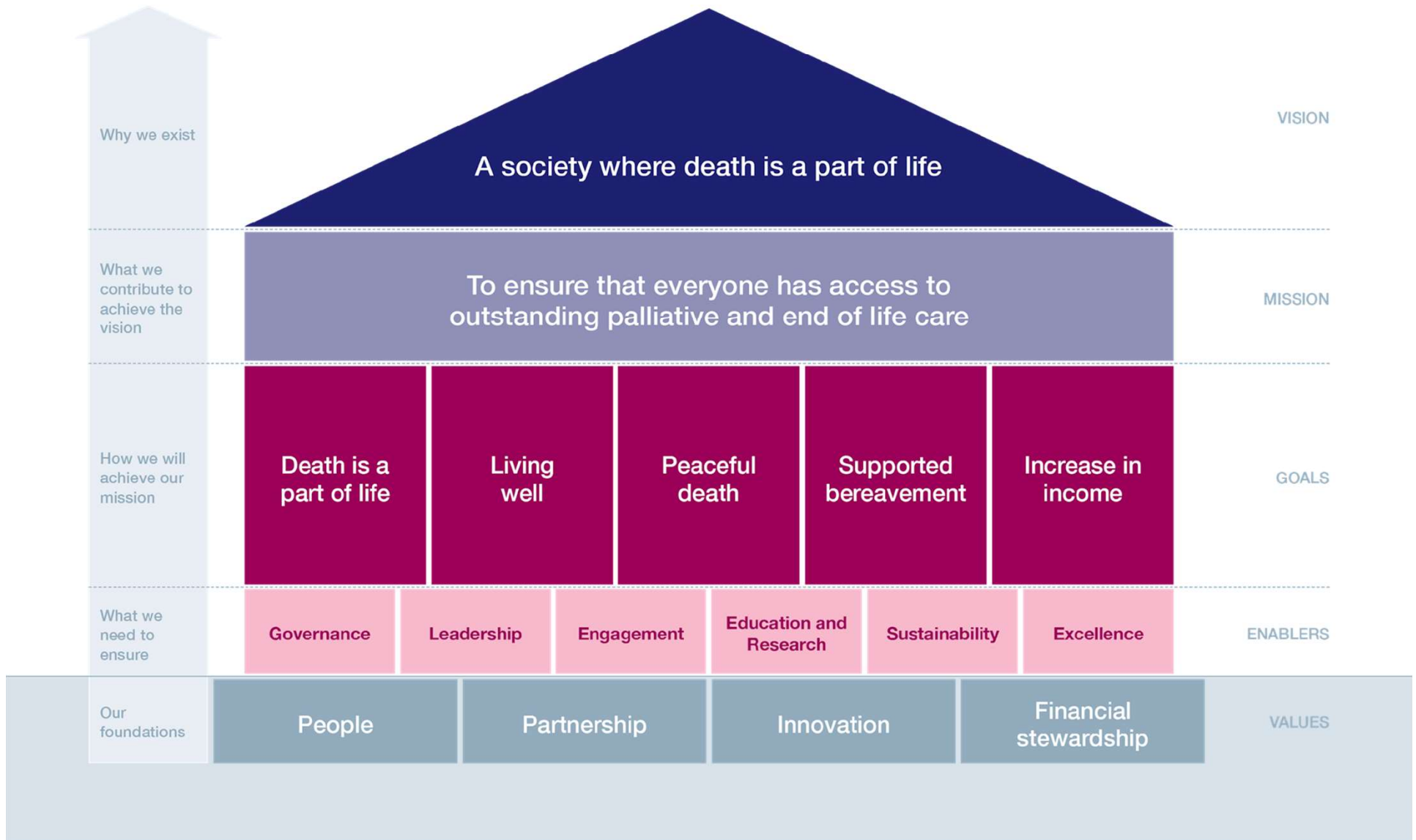
\*All services offered according to the patient need

# Future challenges



# Our strategic house

The plan for our future



# EGO

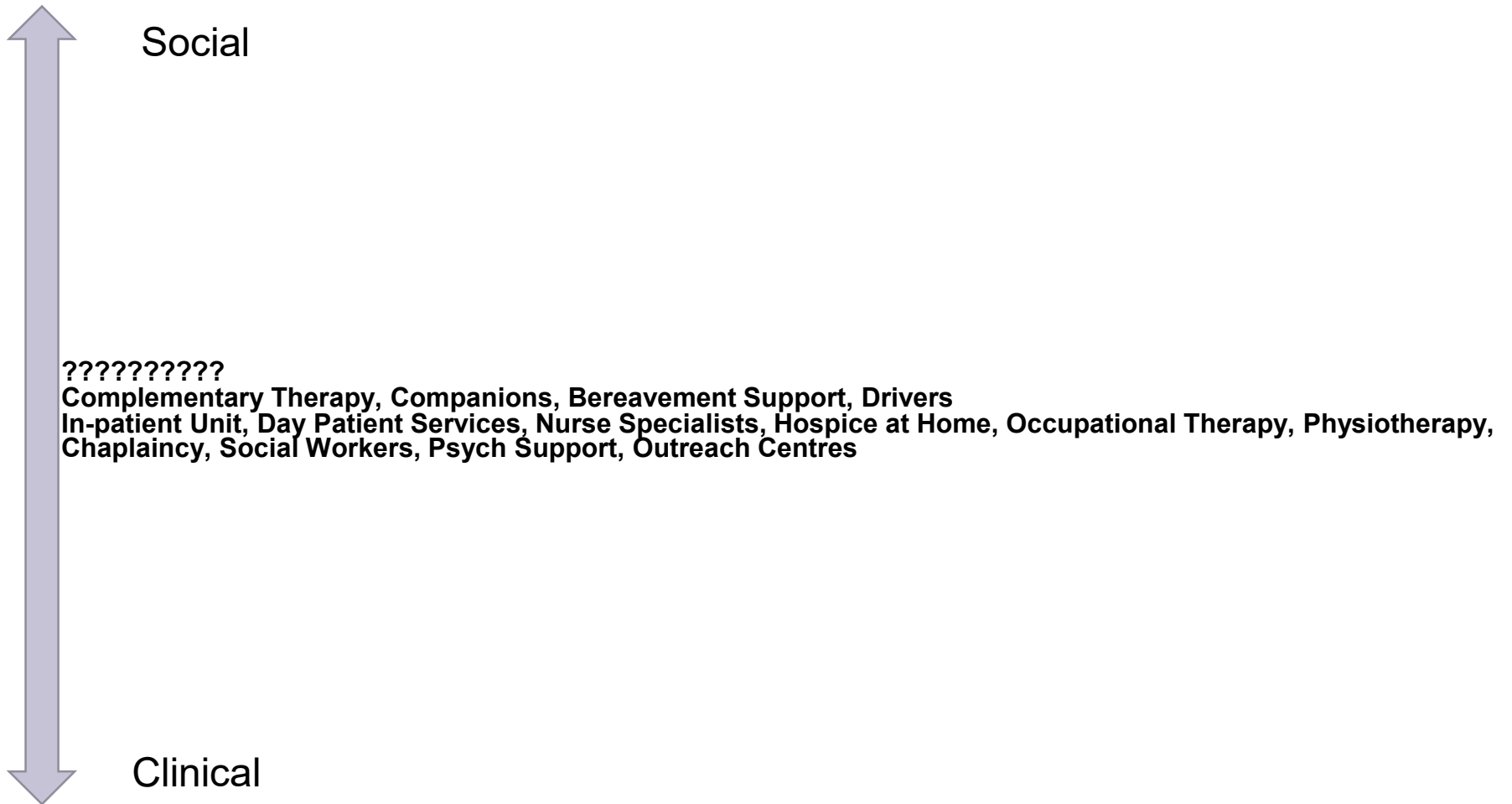


# ECO





# Hospice services



# The 'Care Continuum'



Clinical	Social
Intensive Remote Dependence Vulnerability Weakness Narrow Inequity High cost	Light-touch Accessible Independence Resilience Empowerment Wide Equity Low(er) cost



# Exercise



- 
1. Consider a challenge from your organisation – a change you need to see.
  2. How can you make this happen at a community level?
  3. How many of the barriers to participation can you remove?
  4. What are the remaining risks and how can you mitigate them?

‘Simple, effective, flexible, replicable, cheap, sustainable’

# Case Study:

## Mendip Ecosystem



# Local Needs

1. Improve signposting & awareness
2. Improve local facilities
3. Improve transport
4. Improve support options for patients and bereaved – i.e. flexible, longer term, earlier in diagnosis



# The change we need to see...



---

People need to:

- Understand what a hospice is and what it can offer
- Be confident to have conversations about death and dying - families, friends, medical professionals etc
- Plan for the future - wills, Advance Care Plans, Digital Legacy
- Offer practical support to family, friends & neighbours

# Current projects

---



- Alliance of organisations
- Friends in Grief – bereavement group
- ‘Team Mendip’ – call to action to support our work
- Coffee Club in local GP surgery
- Companions service in the local hospital
- ‘Toolbox’ for organisations

# Opportunities...



- 
- The public campaign and resources - e.g. LEND
  - Public training – e.g. Health Connectors or MECC
  - Community support – e.g. Good Neighbours
  - Training for healthcare professionals
  - Lesson plans for teachers – e.g. bereavement
  - Peer support programme
  - ‘Hospice toolbox’ for community groups so that they can run their own support sessions
  - Compassionate employers schemes
  - Compassionate Cities

**Discussion:**

**Is volunteering dead?**

**Discussion:**

**What is the role of  
volunteer managers in  
this future?**



**Thank you.**

[stephen.dale@dorothyhouse-hospice.org.uk](mailto:stephen.dale@dorothyhouse-hospice.org.uk)

